



# COMPANY PROFILE



Insurance you can trust



# Table of Content

---

About us & Value Statement	2
Our Journey	3
Annual Report & Financial statement	4
Accolades & Awards	5 - 6
Our Brand Mantra	7
Our Board of Directors	8
Our Management Team	9
Our Branch managers	10
Our Products & Services	11 - 12
Fidelity Shield Medical Insurance	13
Our future & Strategy & Our Value Proposition	14
Environment, Social Responsibility and Governance (ESG)	15
Our CSR Initiative	16 - 17
Our Branches	18

# About Us



## Our Vision

Safeguarding livelihoods.



## Our Mission

Sustainably providing financial security and growth to our stakeholders.



## The Soul of Fidelity

We shield you from uncertainty; We remove complexity and jargon from insurance; We give you freedom to grow.

# Value Statement

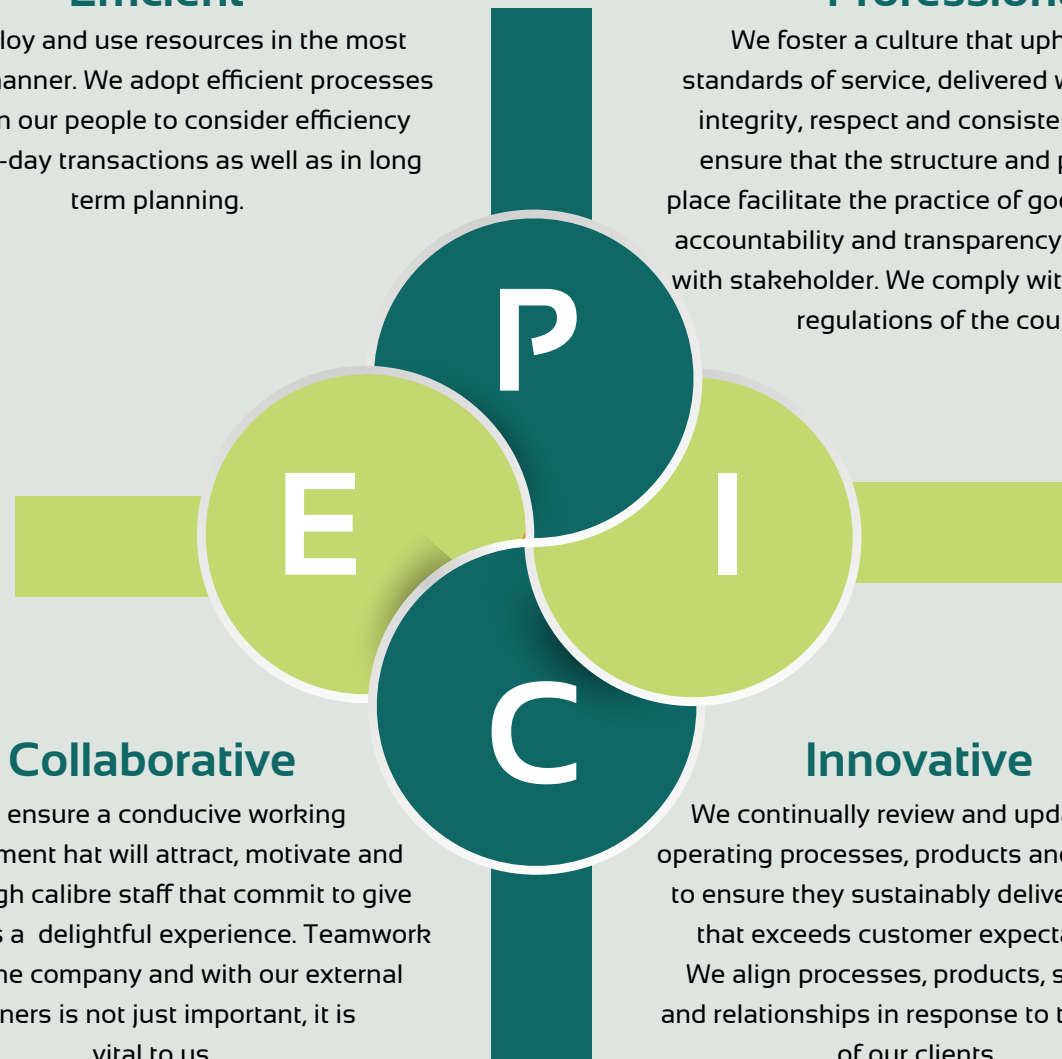
We are E.P.I.C

## Efficient

We deploy and use resources in the most optimal manner. We adopt efficient processes and train our people to consider efficiency in day-to-day transactions as well as in long term planning.

## Professional

We foster a culture that upholds high standards of service, delivered with reliability, integrity, respect and consistency. We also ensure that the structure and processes in place facilitate the practice of good governance, accountability and transparency in all dealings with stakeholder. We comply with the laws and regulations of the country.



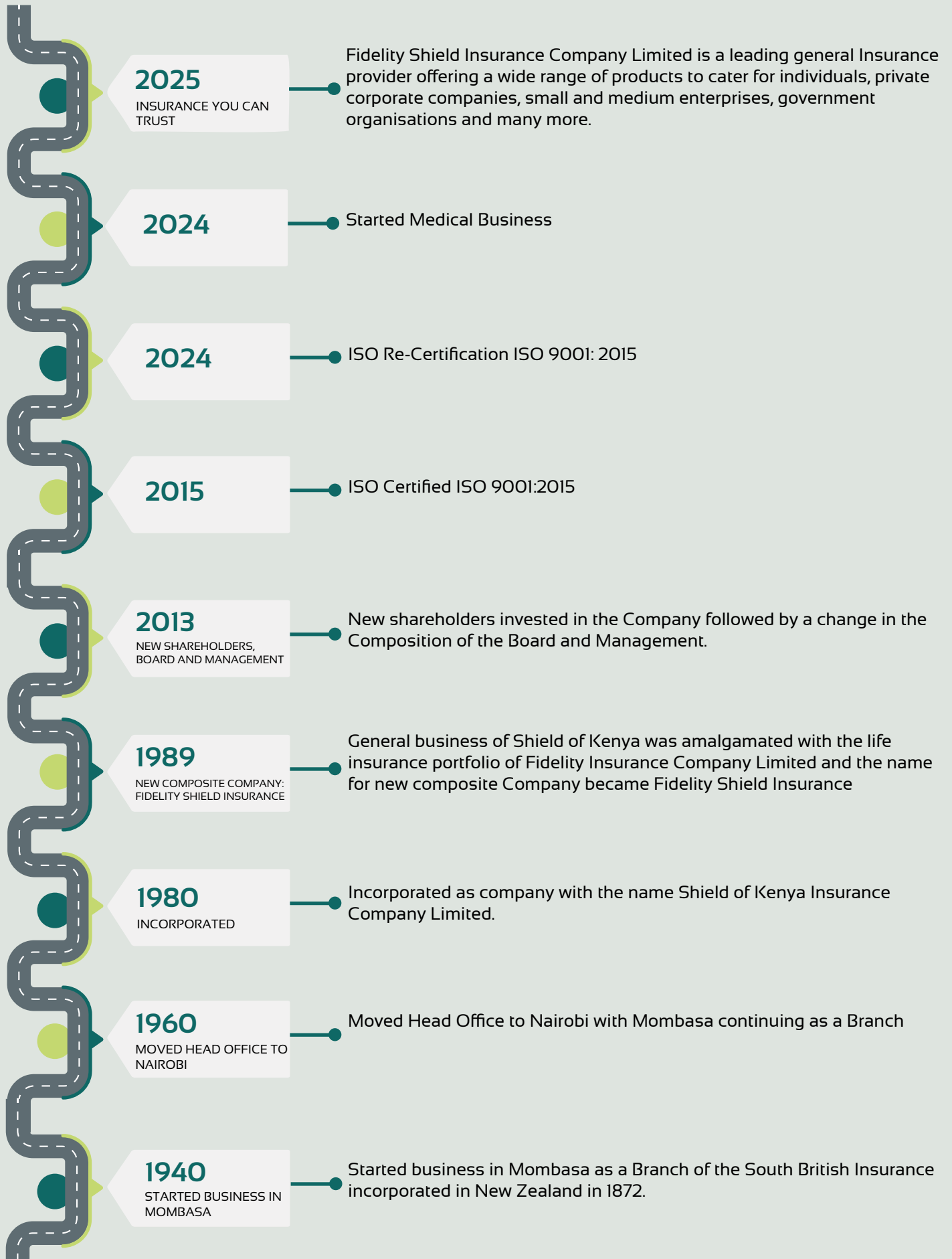
## Collaborative

We ensure a conducive working environment that will attract, motivate and retain high calibre staff that commit to give customers a delightful experience. Teamwork within the company and with our external partners is not just important, it is vital to us.

## Innovative

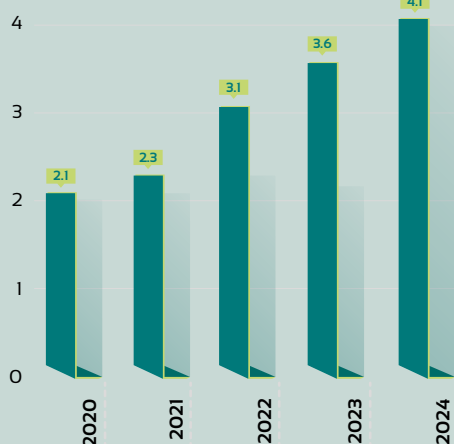
We continually review and update our operating processes, products and services to ensure they sustainably deliver quality that exceeds customer expectations. We align processes, products, services and relationships in response to the needs of our clients.

# Our Journey



# Annual Report & Financial Statement

Gross Written Premium (Kes. Billion)



Insurance Service Revenue (Kes. Billion)



Profit Before Tax (Kes. Million)



Total Assets (Kes. Billion)



Net Assets (Kes. Billion)



# Accolades & Awards





# Accolades & Awards







# Our Brand Mantra

## Service is our DNA

It's that magic touch that leaves you with a pleasant feeling every time you deal with us. And we are here that, not by just saying it, but by living it everyday.

## Transparency is our DNA

Being transparent is not just a business requirement for us, it's the only way we do business. We are forthright and open to your needs. So, when we say we are open for business, we really mean it.

## Happiness is our DNA

Nothing brings us more joy than a smile. Everyday we go to great lengths to provide you with a delightful experience that will leave a smile on your face. And when you smile, we smile too.



# Our Board of Directors



**NICHOLAS KAMERE**

*Chairman*



**ABDULALI A. KURJI**

*Director*



**GLADYS AKINYI**

*Director*



**Dr. JOSEPH KOSKEY**

*Director*



**KEVIN KIPRONO KANGOGO, CFA**

*Director*



**SAMEER NAUSHAD MERALI**

*Director*



**LAWRENCE KIBET**

*Director*



**RICHARD MARISIN**

*Managing Director*

# Our Management Team



**RICHARD MARISIN**

*Managing Director*



**MERCY N. NJOROGE**

*Human Resources Manager*



**ANTHONY MAINA KIRAGU**

*Head of Operations*



**SAMMY KAMAU WANJIKU**

*Manager Claims*



**PATRICK MUKUNZI**

*Manager, Underwriting & Reinsurance*



**JOHN MUNENE NYAGAH**

*Finance Manager*



**ISAAC WEKESA**

*ICT Manager*



**DAVID GITAU**

*Business Development Manager - Retail*



**ROY NGETICH**

*Marketing & Business Development Manager*



**JOHN NYAGAKA**

*Business Development Manager - Medical*

# Our Branch Managers



**NHAAMAN SHARIFF**

*Coast*



**TERRY AMINA**

*Nakuru*



**ALEXANDER ANDAYI**

*Eldoret*



**STEVEN KIANO**

*Thika*



**SAMMY CHIRCHIR**

*Kisumu*



**ROSEMARY FORO**

*Nairobi CBD*



# Our Products & Services

## CORPORATE SOLUTIONS

- »» Fire
- »» Consequential Loss
- »» Machinery Breakdown
- »» Burglary
- »» All risks
- »» Money
- »» Motor Commercial
- »» Marine
- »» Goods in transit
- »» Political Violence, Sabotage & Terrorism

## PERSONAL INSURANCES

- »» Motor Private
- »» Domestic Package
- »» Golfers
- »» Safari Travel Insurance

## CONSTRUCTION/ENGINEERING INSURANCES

- »» Erectors All Risks
- »» Contractors All Risks
- »» Bid Bonds
- »» Performance Bonds
- »» Immigration Bonds

## CORPORATE LIABILITY INSURANCES

- »» Public Liability
- »» Workmen Injury benefits Act (WIBA)
- »» Employers Liability
- »» Fidelity Guarantee
- »» Professional Indemnity
- »» Director & Officers liability
- »» Trustee Liability



## Wherever you go, Go with confidence

From Nairobi to the world, travel worry-free  
knowing we've got your back.

Secure your peace of mind today!

# Travel Insurance



## Built on Trust. Backed by Protection.

Your home is your haven - let's keep it safe  
with Fidelity Shield

Secure your peace of mind today!

# Home Insurance



## Health Secured. Peace Assured

Quality care when you need it most.  
Because your well-being is our priority

Secure your peace of mind today!

# Health Insurance



# Fidelity Shield Medical Insurance:

## A Unique Approach to Health & Well - being

At Fidelity Shield Insurance, we believe that healthcare is more than just treatment - it is about prevention, empowerment, and holistic well-being. Our Medical Insurance products are carefully designed to help our customers achieve their health goals while ensuring they have access to the medical care when needed.

### Comprehensive Medical Solutions

**MY AFYA SHIELD :** is a product geared towards providing health solutions to individuals and families.

**FIDELITY AFYA SHIELD :** which targets starts - ups and companies with a small workforce, looking for health solutions.

**CORPORATE INSURANCE :** A flexible and generative insurance plan for mid-sized and large corporations, ensuring employees' health needs are fully met.

### Why Fidelity Medical Insurance

Unlike traditional medical covers that focus only on curative care, Fidelity Shield takes a bold, forward-thinking approach to health. Our medical plans integrate unique preventive and wellness benefits.

- » Preventive Over Curative Care
- » Holistic Wellness Support

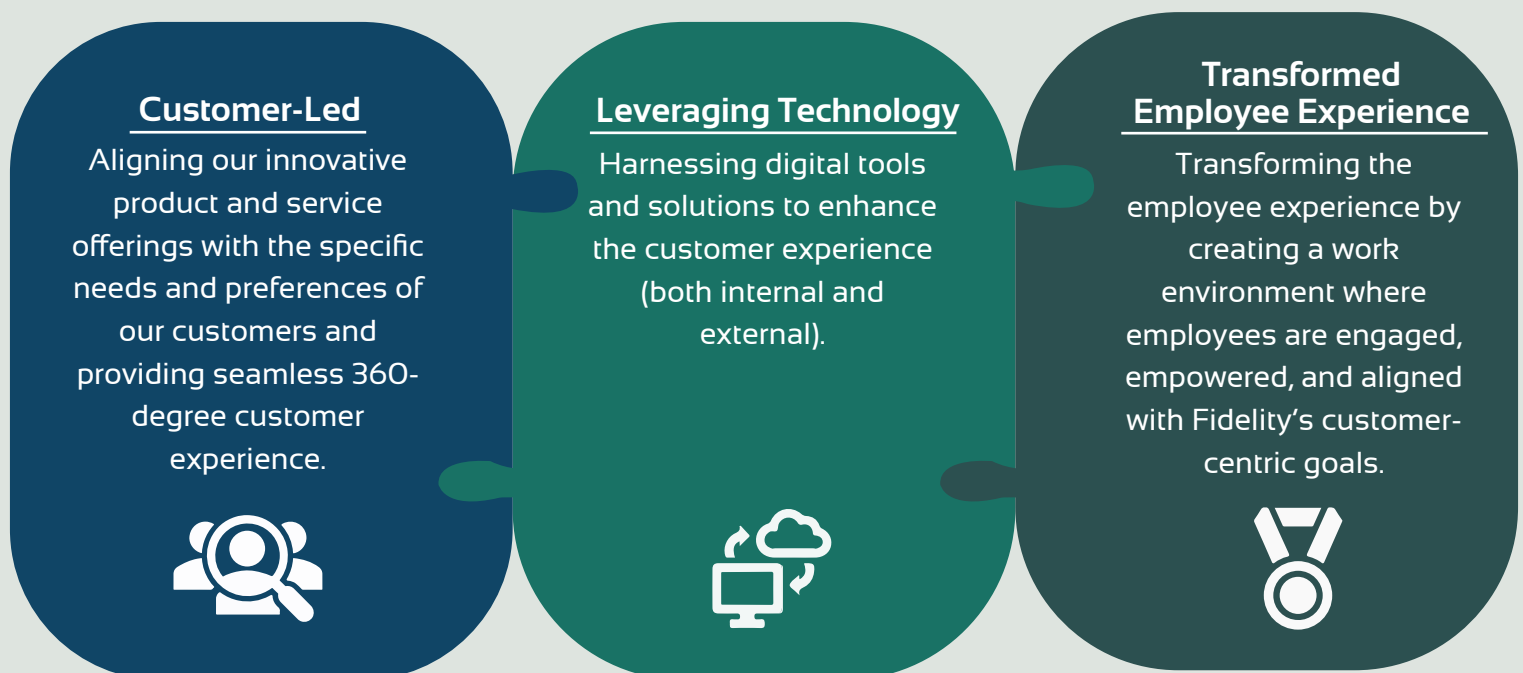
We understand that good health goes beyond physical care. Our medical plans are designed to handle every health scenario, from routine check-ups and emergency treatments to long-term wellness strategies. We build a bulletproof health structure designed to empower individuals, businesses, and communities to lead healthier lives.



# Our Value Proposition



# Our Future & Strategy



# Environment, Social Responsibility and Governance (ESG)



Fidelity Insurance recognizes the critical role the insurance industry plays in advancing ESG principles. Our vision—Safeguarding Livelihoods—guides our commitment to environmental sustainability, social responsibility, and good governance. We offer innovative solutions like livestock insurance under the DRIVE project and EV motor insurance, while promoting diversity, female leadership, and impactful CSR initiatives. By integrating ESG into our operations, we aim to build resilience, enhance our reputation, attract responsible investors, and ensure long-term financial sustainability.



# Our CSR Activities

Activity	Recipient	Comments
Sponsorship for charity walk	Cerebral palsy Society of Kenya	Proceeds to support persons with cerebral palsy
Mater Heart run	Mater Misericordiae Hospital	Contributes to heart surgeries for children from underprivileged background
Tree Planting	Kenya Forest Service & Community Forest Association	Environmental conservation initiative to combat deforestation
Women for cancer	Women for cancer early detection and treatment	Supports cancer screening, awareness, and treatment for women
Golf Sponsorship	Various Golf clubs	Promotes sports development, wellness and networking opportunities
Standard Chartered Nairobi Marathon	Standard Chartered Bank	Encourages community fitness and raises funds for charity
Donations and visits to people living with disabilities	Agape Children home Buger Children home Likoni house of Hope Kibos Secondary school for the blind Malaika initiative for people with disability Compassionate hands for people living with disabilities	Provides essential supplies and emotional support to children.  Supports community engagement and inclusivity for people with special needs.







## HEAD OFFICE

Fidelity Insurance Centre, 3rd Floor,  
Waridi Lane, Off Waiyaki Way, Westlands  
P.O. Box 47435-00100 Nairobi, GPO Kenya  
Telephone (Main): +254 709 988 000  
Telephone (Other): +254 733 620 001  
Telephone (Claims): +254 701 300 300  
E-mail: [info@fidelityshield.com](mailto:info@fidelityshield.com)

## ELDORET

Daima Towers, Mezzanine 2, Uganda Rd  
P.O. Box 7877-30100 Eldoret  
Telephone (Main): +254 709 988 000  
Telephone (Other): +254 709 988 725  
E-mail: [eldoret@fidelityshield.com](mailto:eldoret@fidelityshield.com)

## MOMBASA

MTC Building (formerly Ambalal House),  
South Wing, 8th Floor, Nkurumah Road  
P.O. Box 90103-80100 Mombasa  
Telephone (Main): +254 709 988 000  
Telephone (Other): +254 709 988 601  
E-mail: [mombasa@fidelityshield.com](mailto:mombasa@fidelityshield.com)

## NAKURU

West Side Mall, 3rd Floor, Kenyatta Lane  
P.O. Box 18622-20100 Nakuru  
Telephone (Main): +254 709 988 000  
Telephone (Other): +254 709 999 710  
E-mail: [nakuru@fidelityshield.com](mailto:nakuru@fidelityshield.com)

## KISUMU

Kenya-Re Plaza (Wedco Centre),  
Shop Unit 2 Block B, Oginga Odinga Street  
P.O. Box 2243-40100 Kisumu  
Telephone (Main): +254 709 988 000  
Telephone (Other): +254 709 988 714  
E-mail: [kisumu@fidelityshield.com](mailto:kisumu@fidelityshield.com)

## NAIROBI CBD

Transnational Plaza, 8th Floor,  
Mama Ngina Street  
P.O. Box 47435-00100 Nairobi  
Telephone (Main): +254 709 988 000  
Telephone (Other): +254 702 420 747  
+254 709 988 750  
E-mail: [nairobicbd@fidelityshield.com](mailto:nairobicbd@fidelityshield.com)

## THIKA

Twin Oak Plaza Building - 4th Floor,  
along Kwame Nkrumah Street  
P.O. Box 6283-01000 Thika  
Telephone (Main): +254 709 988 730  
Telephone (Other): +254 709 988 000  
Email: [thika@fidelityshield.com](mailto:thika@fidelityshield.com)



Insurance you can trust

[www.fidelityshield.com](http://www.fidelityshield.com)



Follow us

